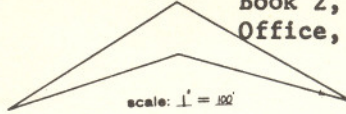


Recorder January 27, 1972 in Plat  
Book 2, Page 10, IZARD COUNTY RECORDER'S  
Office, Melbourne, Ark.

north



scale: 1" = 100'

NE CORNER, SE 1/4, SW 1/4,  
SECTION 11, T-18-N, R-7-W,  
IZARD COUNTY, ARKANSAS

**NO IMPROVEMENTS  
UNTIL  
1978**

**'TREASURE HILLS ADDITION'**

AN ADDITION TO HORSESHOE BEND ESTATES

CONTAINING 426 LOTS AND 191.908 ACRES MORE OR LESS, LOCATED IN  
PART OF SW 1/4 AND PART OF SW 1/4 OF SE 1/4 OF SECTION 11; PART  
OF EAST 150 FEET OF SE 1/4 OF SECTION 10, PART OF THE EAST 150  
FEET OF THE NORTH 150 FEET OF SECTION 15, AND PART OF THE WEST  
350 FEET OF THE NORTH 250 FEET OF SECTION 14, T-18-N, R-7-W,  
IZARD COUNTY, ARKANSAS

**LAND SURVEYOR'S CERTIFICATION**

I HEREBY CERTIFY THAT THE PLAT SHOWN AND  
DESCRIBED HEREON IS THE RESULT OF A SURVEY  
MADE 12-10-1971, THAT IT IS A TRUE AND  
ACCURATE SURVEY AND THE MONUMENTS WERE FOUND  
OR SET AS NOTED.

James R. Cook  
JAMES R. COOK, R.L.S.  
ARKANSAS CERTIFICATE #43

**OWNER'S CERTIFICATION**

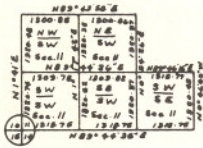
WE HEREBY CERTIFY THAT WE ARE THE OWNERS OF  
THE PROPERTY DESCRIBED AND SHOWN HEREON, THAT  
WE ADOPT THE SUBDIVISION AND DEDICATE  
PERPETUAL USE OF ALL STREETS AND EASEMENTS AS  
NOTED.

HORSESHOE DEVELOPMENT CORPORATION  
BY: *[Signature]*

**LEGEND:**

- ⊙ Indicates Monuments Found.
- Indicates Monuments Set.
- Indicates Building Lines.
- - - - - Indicates 10' Utility Easement.

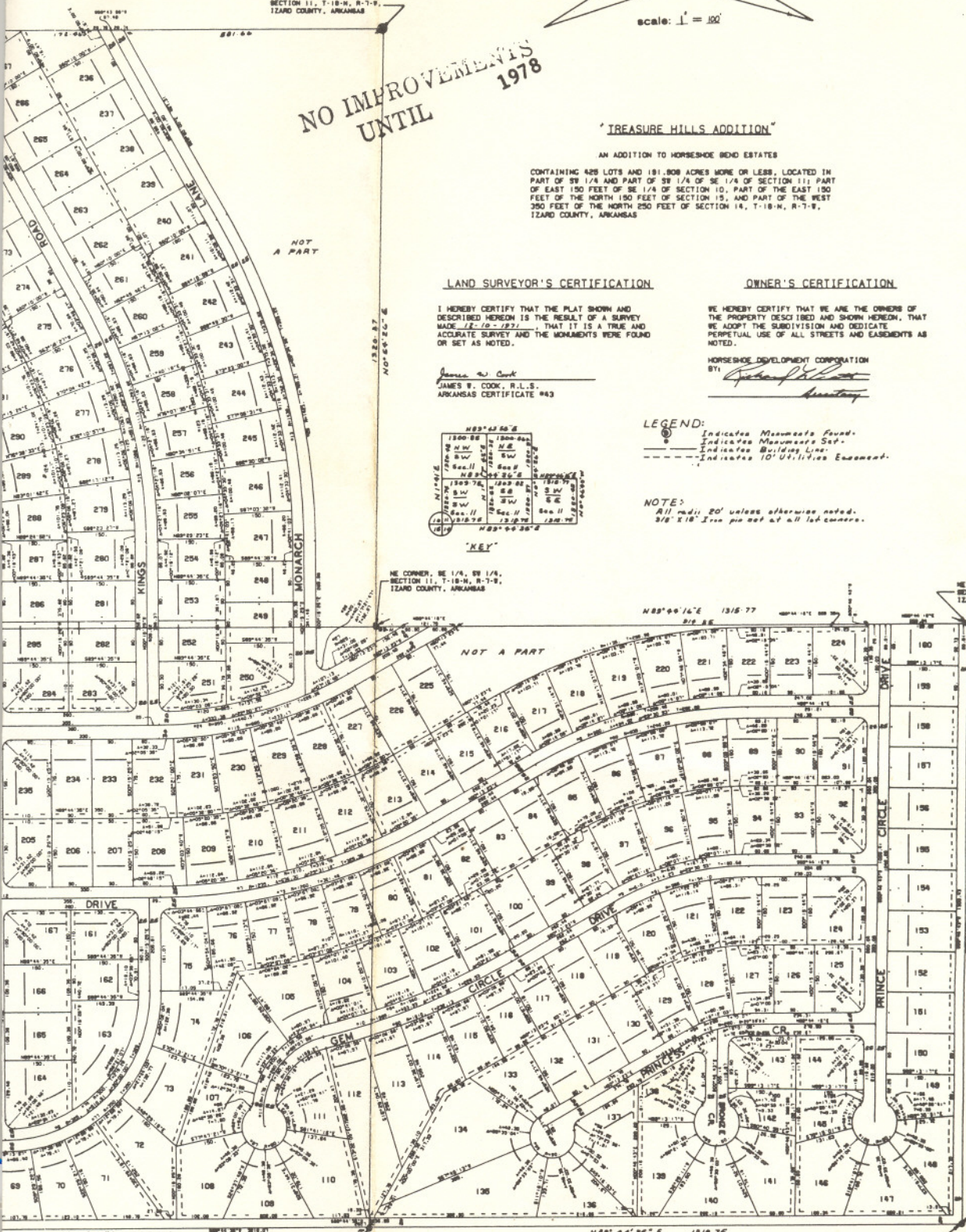
**NOTE:**  
All walls 20' unless otherwise noted.  
3/8" x 18" Iron pins set at all lot corners.



**'KEY'**

NE CORNER, SE 1/4, SW 1/4,  
SECTION 11, T-18-N, R-7-W,  
IZARD COUNTY, ARKANSAS

NE CORNER, SW 1/4, SE 1/4,  
SECTION 11, T-18-N, R-7-W,  
IZARD COUNTY, ARKANSAS



N89°46'35\"/>

SE CORNER, SE 1/4, SW 1/4,  
SECTION 11, T-18-N, R-7-W,  
IZARD COUNTY, ARKANSAS

N89°46'35\"/>

SE CORNER, SW 1/4, SE 1/4,  
SECTION 11, T-18-N, R-7-W,  
IZARD COUNTY, ARKANSAS

**TREASURE HILLS ADDITION**

38